

# GPR-DETECTOR

SECURITY APPLICATIONS



FOR LOCATING MOVING PEOPLE  
BEHIND THE WALL



LOGIS-GEOTECH 

Phone/fax: +7 495 641-2-641

E-mail: [info@geotech.ru](mailto:info@geotech.ru), [www.geotechru.com](http://www.geotechru.com)

Address: 5, Entuziastov St., Bldg.39, Moscow, 111024, Russia



# GPR-Detector RO-900



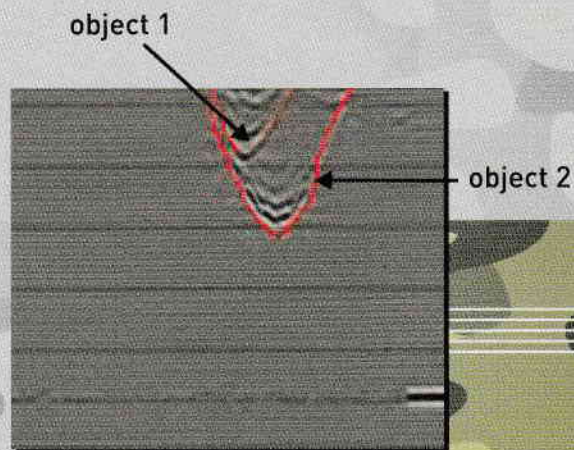
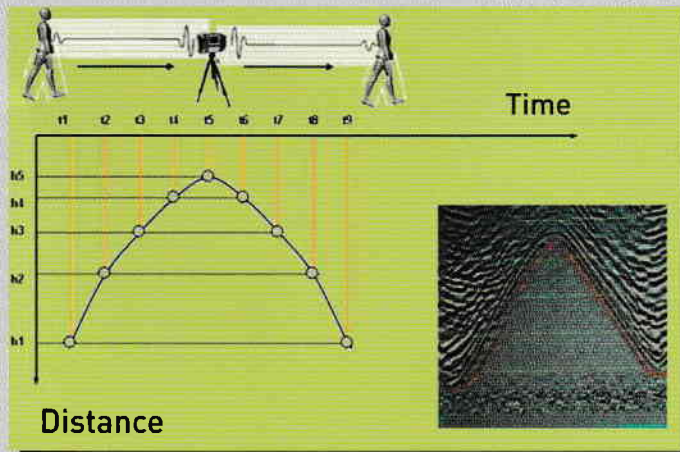
RO-900 is a small, portable device designed to locate people hidden behind reinforced concrete, brick and multi ply walls.

## RO-900

RO-900 allows its operators to quickly receive crucial information about location, distance and movement of a given target. It also can detect someone breathing, which makes it especially useful during search and rescue operations; for example in the case of an earthquake or other destructive natural disasters. The RO-900's portable and miniature size makes it highly functional and extremely easy to operate in almost in any situation.

### SPECIFICATIONS

- 14 meter detection range
- Central frequency 900 MHz
- Dimensions 245x104x78 mm
- Weight 0.8 kg
- Running time 4 hours
- Temperature range - 20°C ... +45°C
- Environmental IP66



## SECURITY APPLICATIONS



## RO-400



GPR RO-400 provides information about the presence of people behind brick, concrete (including thick reinforced concrete) walls. RO-400 can detect objects behind several walls. The equipment can find the objects caches in the soil at depths up to 5 m

## RO-400



- Wireless video for remote display
- Operable at a safe distance from a wall (up to 100 meters within the line-of-sight coverage)
- Two operating modes (Moving Object Detection mode and Search GPR mode)

### SPECIFICATIONS

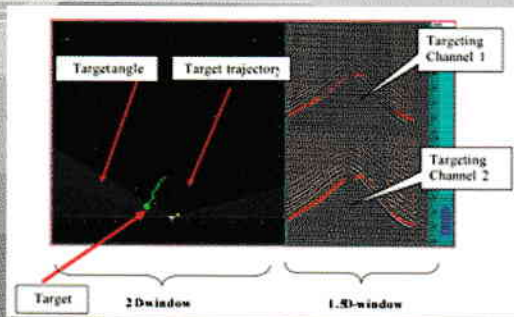
- 21 meter detection range
- Central frequency 400 MHz
- Resolution 0,15 m
- Dimensions 396x290x155 mm
- Weight 4.4 kg
- Running time: 4 hours
- Temperature range - 20°C ... +45°C
- Environmental IP66

## RO-400 (2D)

- 2D image
- Wireless video for remote display (optional)
- Operable at a safe distance from a wall (up to 100 meters within the line-of-sight coverage)
- Two operating modes (Moving Object Detection mode and Search GPR mode)

### SPECIFICATIONS

- Resolution 0,15 m
- 21 meter detection range
- Central frequency 400 MHz
- Dimensions 960x290x155 mm
- Weight 5.8 kg
- Running time: 4 hours
- Temperature range - 20°C ... +45°C
- Environmental IP66

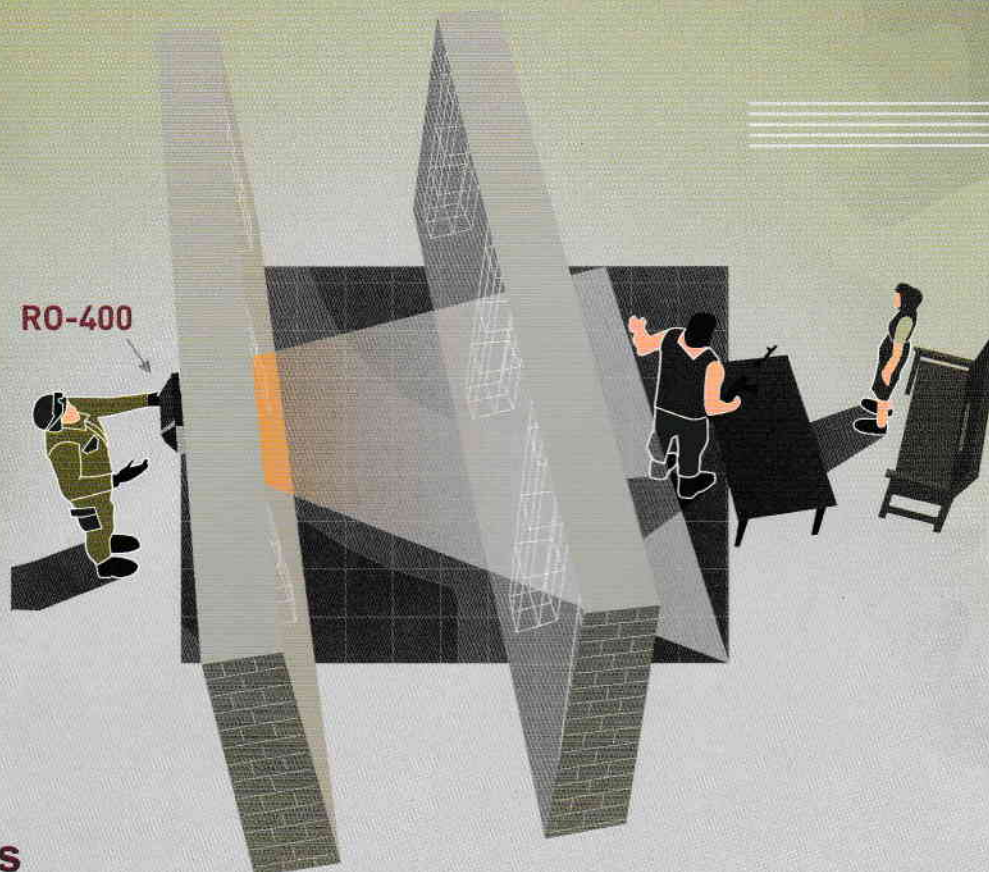


Screen capture of GPR RO-400 (2D)



# GPR-DETECTOR

**GPR-Detector is a portable and easy-to use GPR (Ground Penetrating Radar) solution, designed for locating moving people behind several reinforced-concrete walls and multi-layer building constructions in real time**



## Features

- Locates people behind several reinforced concrete walls of up to 0.6 meters thick and multi-layer building constructions
- Detects movement of people through several walls or/and other types of obstacles in real time
- up to 21 meter detection range
- User-friendly interface
- Wireless video for remote display (optional)
- Operable at a safe distance from a wall (up to 100 meters within the line-of-sight coverage)
- Two operating modes (Moving Object Detection mode and Search GPR mode)

## Applications

- Detection of moving people behind reinforced concrete walls
- Detection of caches
- Detection of holes, underground communication passes, hideouts
- Detection of contraband criminal disposals, etc
- Detection of mine-explosive devises, including uncased ones or those in non-metal cases, placed in building constructions as well as under roads and railways.